



Antipodes Music Servers



X-Series Modular Solutions

It All Adds Up

Antipodes new X-Series Modular Music Servers are a unique new way to offer high-end audio products. Instead of offering “good-better-best” options at different price and different quality levels, the Antipodes new Modular Series, only offers the “best” option with no compromises.

But where this is unique is that the solution is provided in four separate units. Two units, the CX and EX can stand alone as true high-end music servers, but when used together in a CX+EX solution the sound quality is dramatically enhanced.

Furthermore, the P1 and P2 platforms, carved from solid alloy block, extend the functionality and audio performance of a CX, or of an EX, or of the CX+EX.

The result is a smooth upgrade path where you can avoid making compromises, start with just a CX or an EX, and add the other products progressively to get to the ultimate Antipodes X-Series solution.

No more trade-ups, just add-ups.

Four Products

EX & CX Music Servers

- Play Direct to your DAC with a Choice of Connections
- Stream to Networked Players
- Remote control by Desktop, Laptop, Tablet or Smartphone



- Stream from Internet Services
- Play from Internal Storage and Network Storage
- Copy Music to and from the Server
- Download Music Direct to the Server

Many Possibilities

P1 Platform

- Solid Alloy Block For Vibration Isolation of a CX or EX
- High Precision Auto-Ripper
- User Replaceable Drive

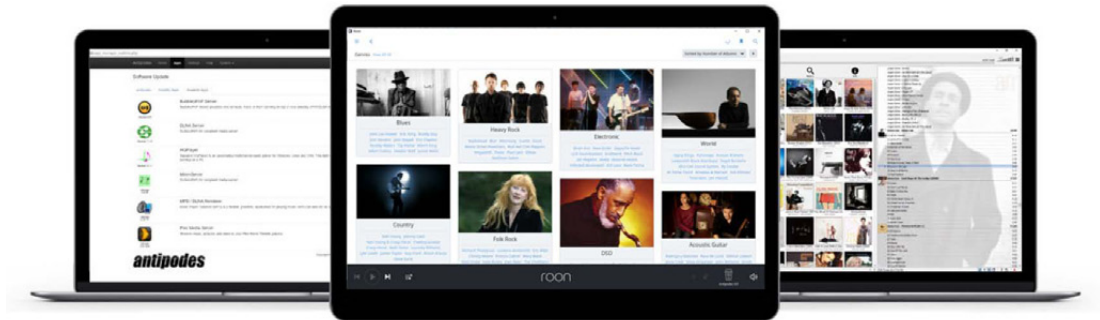


P2 Platform

- Solid Alloy Block For Vibration Isolation of a CX or EX
- Re-clocked & Expanded Output Options
- User Installable/Upgradable Electronics
- Remote control by Desktop, Laptop, Tablet or Smartphone

Application Suite

Easy Point & Click Setup & Remote Control



Three Complete Playback Solutions



squeezebox



Three Renderer Applications



A Range Of Server Applications

PLEX



DLNA

SONOS

We follow an open systems approach to the applications installed on Antipodes Music Servers. This allows us to bring you the world's best file playback and streaming applications, as they emerge.

User Installable Storage



The CX and EX can each take up to two 2.5" 7mm SATA Drives, whether HDD or SSD, but SSD is highly recommended for superior sound. Installable by the owner or by the dealer.

Owners can purchase their storage and slide the drives in the rear slots, and then contact Antipodes Support to optimise the storage in a remote support session.

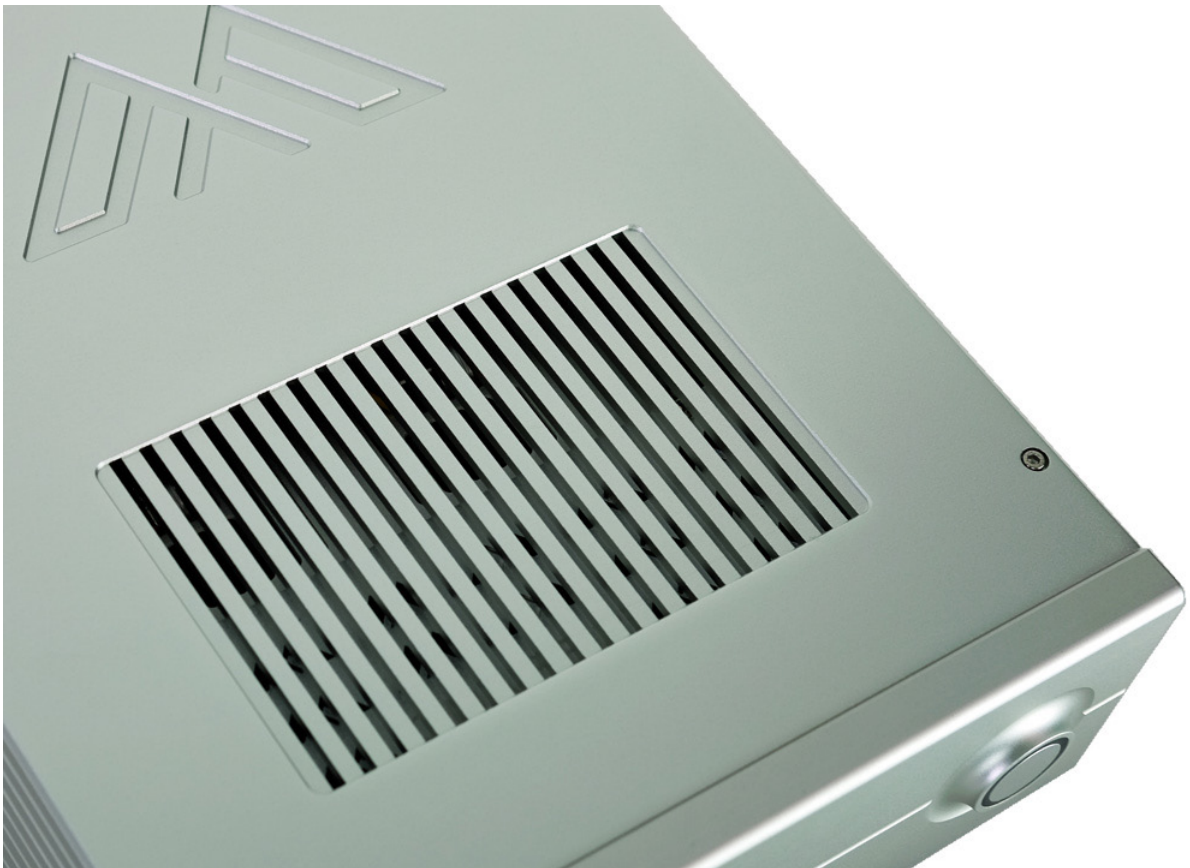
CX Music Server

The CX is a breakthrough product providing high computing power without compromising sound quality.

High computer clock speeds interfere with digital audio signals and this causes harsh sound, even when using a separate renderer.

But this problem is solved in the Antipodes CX, due to Antipodes expertise in computer chip tuning, and using a full desktop i5, with four real cores, running at a low clock speed.

This approach provides sufficient power to easily navigate a very large Roon library, and to transcode your redbook files on-the-fly to DSD512.



EX Music Server



The EX is our entry level product but is designed without any audio performance compromise. The EX also has a built-in good sounding analog output, avoiding the need to buy a DAC if you are coming to computer audio for the first time. You can upgrade by adding a high quality DAC and the EX will reveal its amazing potential. Or you can upgrade further by adding the CX, P1 or P2.

The EX has less processing power than our CX, but there are only a few Roon DSP features that are too demanding. For example you can easily play PCM files to up to 32bit/768kbps, and DSD to DSD512 with the EX. Upsampling to high 32bit/768kbps PCM on-the-fly is also well within its capabilities. Only high intensity computations like transcoding/upsampling to DSD256 and DSD512 on-the-fly are beyond its power limits.

CX+EX Solution

- The Ideal solution for Roon users
- Dedicate the CX to the Server function
- Dedicate the EX to the Renderer function
- Separating the functions improves their performance
- The CX and EX are connected together by Direct Ethernet
- Side-by-side they are the same width as a full-width device



CX+EX Extended Solution

- CX+EX Solution
- Plus P1 Auto-Ripper
- Plus P2 Re-clocked Outputs
- Solid Platform Vibration Isolation for CX & EX



Possible Combinations



EX Standalone



EX & P1
- Isolation
- Auto-Ripper



EX & P2
- Isolation
- Re-Clocked Outputs



EX, P1 & P2
- Isolation
- Auto-Ripper
- Re-Clocked Outputs

CX+EX Solution





CX Standalone



CX & P1
- Isolation
- Auto-Ripper



CX & P2
- Isolation
- Re-Clocked Outputs



CX, P1 & P2
- Isolation
- Auto-Ripper
- Re-Clocked Outputs

CX+EX Extended Solution



Specifications

CX & EX

Colour: Silver or Black

Storage Options:

User-Installable: Up to two 2.5" 7mm
Sata HDDs or SSDs

HARDWARE FEATURES

High Power V4H Circuit (CX)
Medium Power V4X Circuit (EX)
Fanless All Alloy
Four Screened Chambers Construction
ODAPS2 Level 3 Internal Linear Power Supply
USB Audio 2.0 Output
PCM to 32bit / 768kHz PCM
DoP to DSD512, Native DSD to DSD512
Ethernet Direct Output
Stereo Analog Output (EX Only)

POWER

110-120VAC or 220-240VAC User-Switchable

DIMENSIONS

240mm (w) x 290mm (d) x 90mm (h)
9.5in (w) x 11.4in (d) x 3.6in (h)

SOFTWARE FEATURES

Music Playback Options:

Roon Server & Roon Ready
SqueezeBox & Squeezelite
MPD
DLNA/UPnP/OpenHome
HQPlayer NAA
Spotify Connect
SONOS Integration
Plex Media Server

Admin Applications

Find My Antipodes
CD-Import Auto-Ripper
Playback App Switcher
External Drive Mounter
Browser-Based Setup GUI
SMB Server For File Management
& Downloads

WARRANTY

24 Months Return To Vendor Extendable
To 36 Months By Online Registration

P1 & P2

COLOUR

Black

DIMENSIONS

240mm (w) x 290mm (d) x 40mm (h)
9.5in (w) x 11.4in (d) x 1.6in (h)

POWER

Powered from CX or EX

WARRANTY

36 Months Return To Vendor

More detailed information can be found on our website antipodesaudio.com



Antipodes Audio Limited
www.antipodesaudio.com
Manufactured In New Zealand

Copyright 2018 - All Rights Reserved